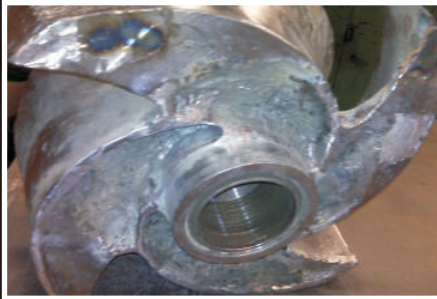


## ENECON Saves Los Angeles Power Plant Thousands of Dollars



This pump, from a Los Angeles County power plant, had been suffering from extreme corrosion due to the pump's constant exposure to brine. Replacing the impeller alone would cost about \$50,000.

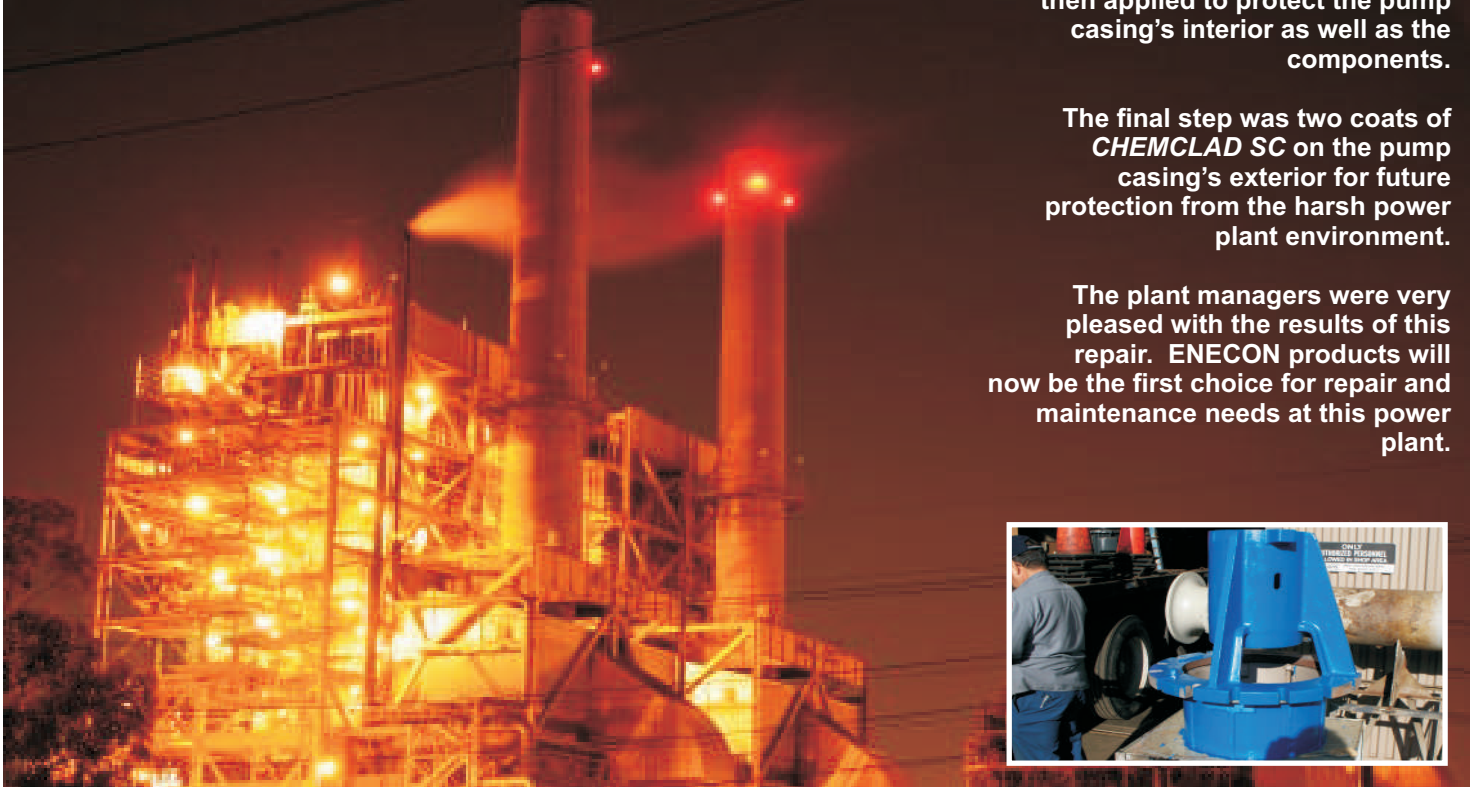
Traditional repair methods called for welding, which would take roughly four to five days to complete and then applying their current corrosion protection coating which often failed.

The plant managers were looking for a more reliable solution to this corrosion problem and they contacted their local ENECON Field Engineer who recommended a cost effective, proven solution for a fraction of the usual cost and half the usual time.

The pump and its components were grit blasted and the eroded areas were rebuilt with *DurAlloy*. Two coats of *CeramAlloy CL+AC* were then applied to protect the pump casing's interior as well as the components.

The final step was two coats of *CHEMCLAD SC* on the pump casing's exterior for future protection from the harsh power plant environment.

The plant managers were very pleased with the results of this repair. ENECON products will now be the first choice for repair and maintenance needs at this power plant.



6 Platinum Court • Medford, NY 11763  
Toll Free: 888-4-ENECON • Phone: 516-349-0022 • Fax: 516-349-5522  
[www.enecon.com](http://www.enecon.com) • [info@enecon.com](mailto:info@enecon.com)