

CeramAlloy CL+ Saves the Day for Major U.S. Power Company

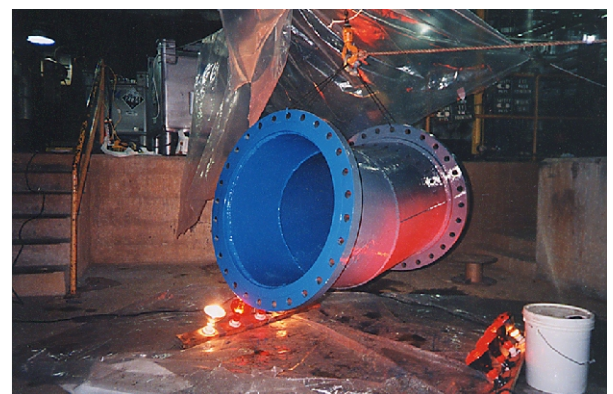
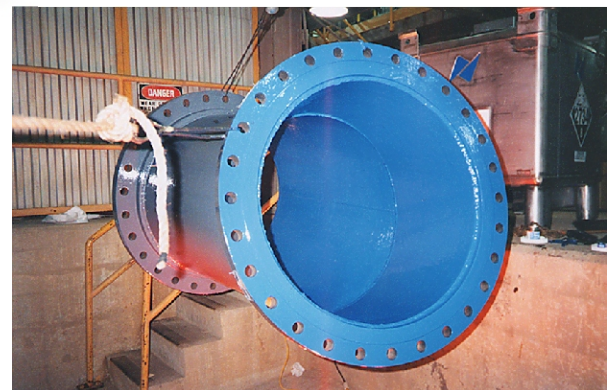
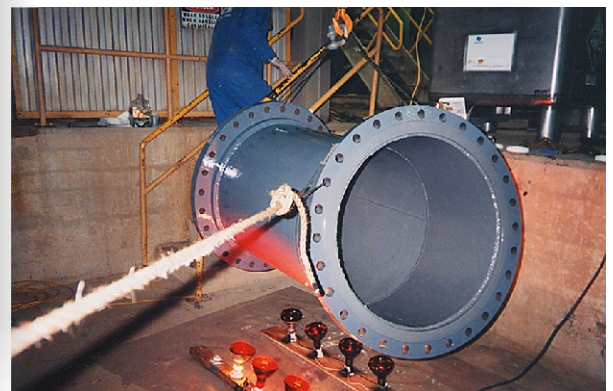
John Huber, ENECON North East's Senior Field Engineering Specialist, received an urgent call from a power station in the New York area.

A cement lined spool piece elbow had started leaking and a quick yet very reliable repair had to be made to get this pipe section back in service since it was part of the power plant's main cooling water system.

After removing the cement liner, however, it was discovered that

the steel spool piece had been so corroded that it was not salvageable. The concrete liner only hid the corrosion problems.

The plant decided to fabricate a new spool piece section and then protect it with METALCLAD CeramAlloy CL+ to provide long-term erosion and corrosion protection to this vital component.



700 Hicksville Road • ENECON Center Suite 110 • Bethpage, New York 11714
Toll Free: 888-4-ENECON • Phone: 516.349.0022 • Fax: 516.349.5522
Website: www.enecon.com • Email: info@enecon.com