

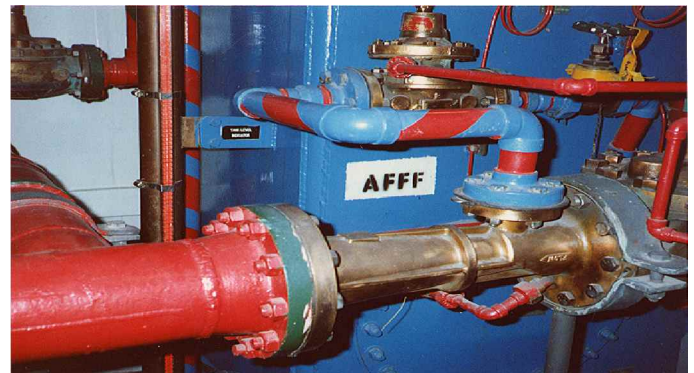
**US Navy
turns to
CeramAlloy
to solve
tough
chemical
attack
problems
caused by
fire fighting
foam (AFFF)
on decks &
bilge
pockets
where
conventional
paints
simply don't
measure up.**



FROM: DCC STEWART, USS AUSTIN (LPD-4)
TO: PALMER ENECON
SUBJ: CERAMALLOY APPLICATION TO AFFF BILGES

MAINTAINING AFFF STATION DECKS HAS LONG BEEN A PROBLEM FOR SHIPS FORCE. VARIOUS PRIMERS AND PAINTS HAVE BEEN APPLIED TO NO AVAIL DUE TO THE CORROSIVE PROPERTIES OF AFFF, DURING A RECENT VISIT FROM PALMER ENECON TECH REPS A CERAMALLOY REPAIR WAS DONE TO THE NUMBER 2 MAIN CONDENSER, THERE WAS A CONSIDERABLE AMOUNT OF CEREMALLOY LEFT OVER FROM THIS REPAIR, THE SUGGESTION WAS MADE TO USE CERAMALLOY IN MY AFFF BILGE POCKETS, THE BILGES WERE TAKEN DOWN TO BARE METAL, SUPER CLEAN WAS USED TO THOROUGHLY CLEAN FOR FINAL PREP, THE CERAMALLOY WAS MIXED AND APPLIED TO THE BILGE AT ROUGHLY 3/16" THICKNESS, WHEN IT WAS DRY AND HARD VARIOUS TESTS SUCH AS DOUSING WITH SALT WATER AND AFFF WERE CONDUCTED, THIS WAS ALLOWED TO SIT IN THE BILGE OVERNIGHT, IT WAS THE RINSED DOWN WITH FRESH WATER, THE CERAMALLOY WORKED PERFECTLY, IT IS BY FAR THE BEST SUBSTANCE USED YET TO MAINTAIN AFFF BILGE POCKETS, IT IS VIRTUALLY MAINTENANCE FREE AND REQUIRES ONLY AN OCCASIONAL WET MOP TO CLEAN, THIS STUFF WORKS!!

V/R DCC (SW) STEWART



700 Hicksville Road • ENECON Center Suite 110 • Bethpage, New York 11714
Toll Free: 888-4-ENECON • Phone: 516.349.0022 • Fax: 516.349.5522
Website: www.enecon.com • Email: info@enecon.com