

*New Jersey Grout  
Manufacturer  
Repairs & Protects  
Containment Areas  
with DuraQuartz,  
FPS-2000 &  
CHEMCLAD SC.*



This, the largest of the three areas was first power washed, then abraded with a floor sander; cracks were repaired with ENECRETE DuraQuartz and then coated with ENECLAD FPS 2000.

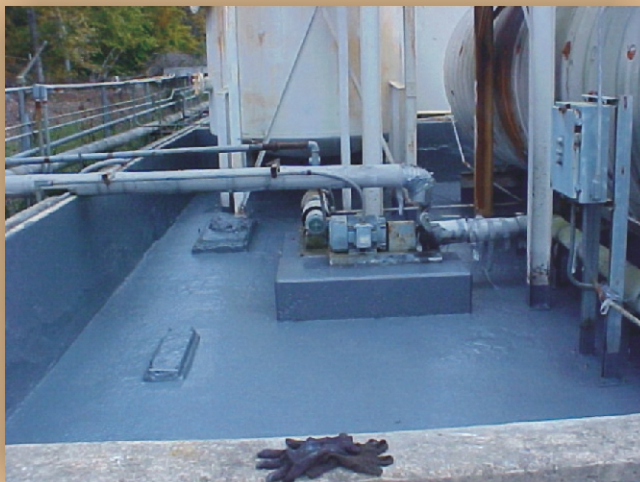
This \$31,000 project included three containment areas. The largest was asphalt and the other two were concrete. The asphalt had been previously coated with an epoxy paint which had deteriorated and

cracked. The concrete areas had never been coated.

The ENECON Mid Atlantic Engineering Team completed this entire project in just 4 days to the complete satisfaction of the plant engineers.



View from the opposite direction. Pallets containing drums of chemicals are stored here.



The second containment area was first power washed, cracks were repaired with DuraQuartz, P4C was applied over the concrete followed by 2 coats of CHEMCLAD SC.



The third containment area was repaired and protected as per the second containment area.

700 Hicksville Road • ENECON Center Suite 110 • Bethpage, New York 11714  
Toll Free: 888-4-ENECON • Phone: 516.349.0022 • Fax: 516.349.5522  
Website: [www.enecon.com](http://www.enecon.com) • Email: [info@enecon.com](mailto:info@enecon.com)