



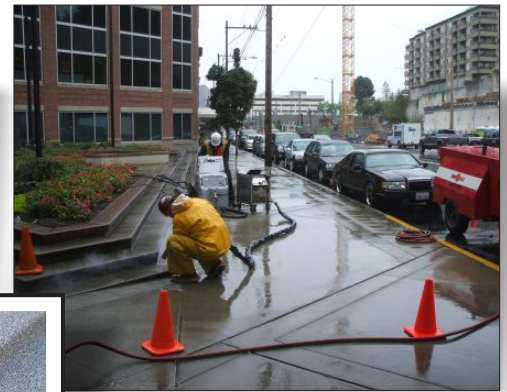
## Seattle Office Building Steps are Repaired with ENECRETE DuraQuartz

**Client:** Commercial office building

**Location:** Seattle, WA

**Problem:** High traffic main entrance steps were unsightly and beginning to deteriorate causing a potential tripping hazard. This entrance could not be shut down and sidewalk pedestrians could not be adversely effected by any repair process.

**Solution:** This \$20,000+ project began with dry ice blasting, completed in the unpredictable Seattle weather, to clean the steps prior to application. ENECRETE DuraQuartz with a customized broadcast system was then used to re-build the steps, create slip-resistance and protect them from future deterioration.



6 Platinum Court • Medford, NY 11763  
Toll Free: 888-4-ENECON • Phone: 516-349-0022 • Fax: 516-349-5522  
www.enecon.com • info@enecon.com