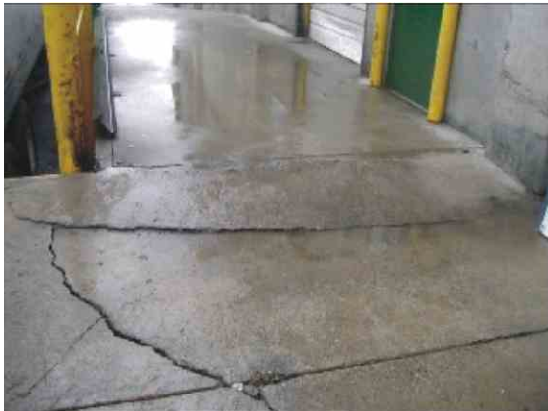


DuraQuartz Stands Up to Forklift Traffic... 17,280 Times a Week!



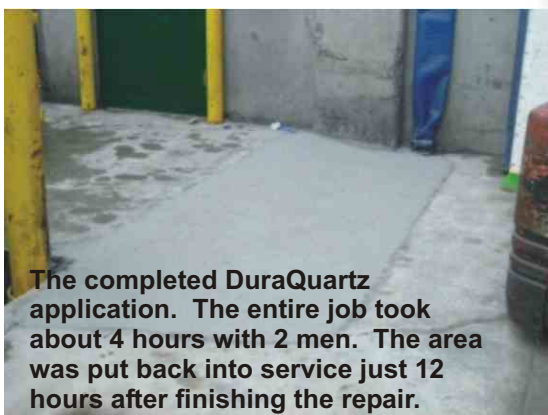
Years of settling and heavy forklift traffic had created approximately 4" of damage between concrete slabs on the cold storage loading dock at this Seattle-based seafood processor.



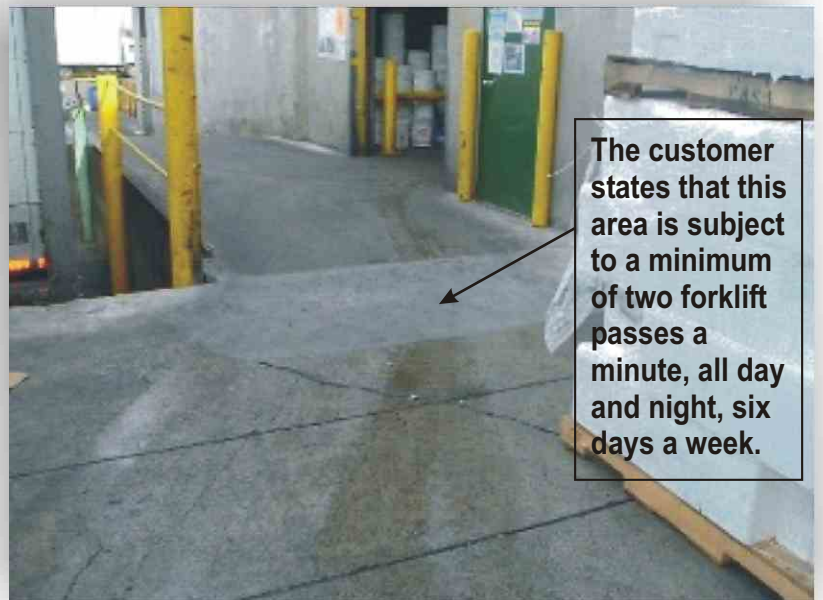
The facility attempted to repair the problem several times using various quick-set concrete repair materials. Each of these repairs would fail very quickly when exposed to the constant forklift traffic.



After the removal of the previous repair, the damaged area was abraded, cleaned and dried with a propane torch.



The completed DuraQuartz application. The entire job took about 4 hours with 2 men. The area was put back into service just 12 hours after finishing the repair.



The customer states that this area is subject to a minimum of two forklift passes a minute, all day and night, six days a week.